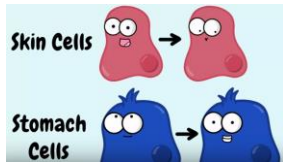


Name: _____

Date: _____

Cell Cycle with the Amoeba Sisters

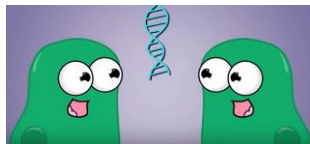


Find the video at <https://www.youtube.com/watch?v=f-lDpgEfAHI> or search Youtube for amoeba sisters mitosis

1. Mitosis makes cells that are
- a. different from each other
 - b. identical to each other
 - c. bigger than before

Interphase

2. Which activity happens during S of Interphase?
- a. Growth
 - b. DNA Replication
 - c. Cell Functions
 - d. Cell Splitting
3. Where is DNA found?
- a. Cell membrane
 - b. ribosome
 - c. cytoplasm
 - d. nucleus
4. What is DNA?
- a. genetic information
 - b. chain of amino acids
 - c. carbohydrate sugar



5. How does the DNA in the new cells compare to the original cell?
- a. It's older
 - b. it's half the amount
 - c. it's Identical



6. Inside the nucleus DNA is organized into
- a. Spheres
 - b. Nucleotides
 - c. Chromosomes
 - d. Cubes
7. How many chromosomes do humans have?
- a. 23
 - b. 46
 - c. 92
 - d. 104

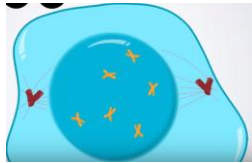


8. When is DNA duplicated (copied)?
- a. Interphase
 - b. Mitosis
 - c. Prophase
 - d. Cytokinesis



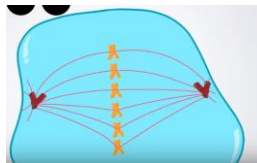
9. Fill in the phase names below:

P _____ M _____ A _____ T _____



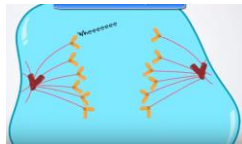
10. In Prophase, what happens?

- a. Chromosomes are visible and nucleus is present b. No nucleus and no chromosomes



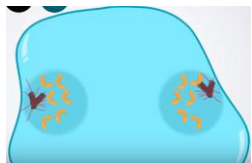
11. In metaphase where are chromosomes?

- a. At the ends b. Around the cell membrane c. Lined up at the middle



12. In anaphase the chromosomes

- a. move apart to the poles b. line up in the middle c. spread out in the cytoplasm



13. In telophase where are the chromosomes

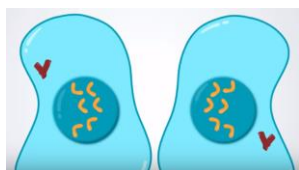
- a. At the middle b. Outside the cell c. At opposite ends

14. How many chromosomes will each new human cell have?

- a. 23 b. 46 c. 92 d. 104

15. How will the two new cells compare?

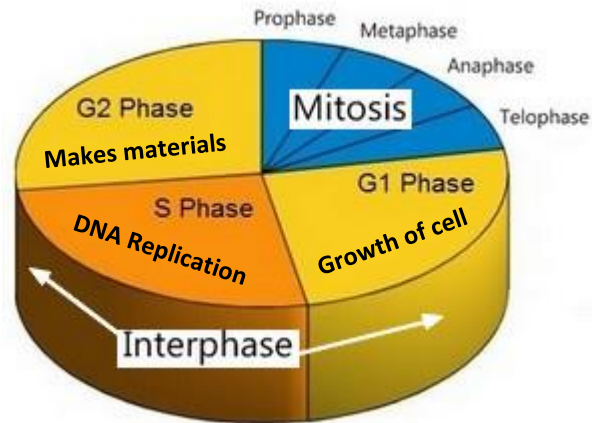
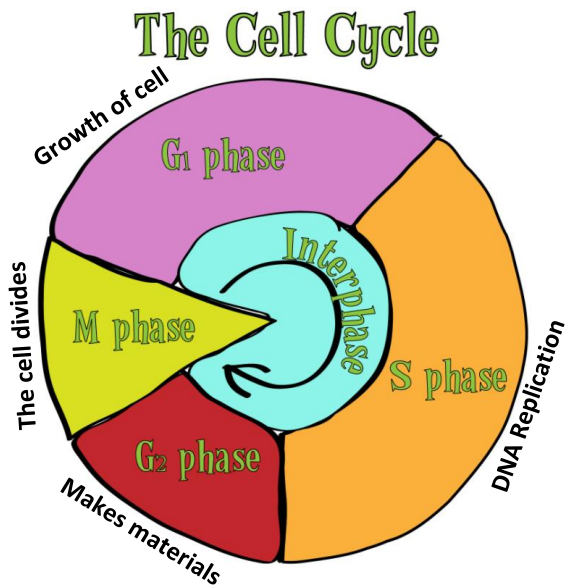
- a. Identical b. Different c. Bigger d. Smaller



16. What is the final process that splits the cells?

- a. Telophase b. Interphase c. Anaphase d. Cytokinesis

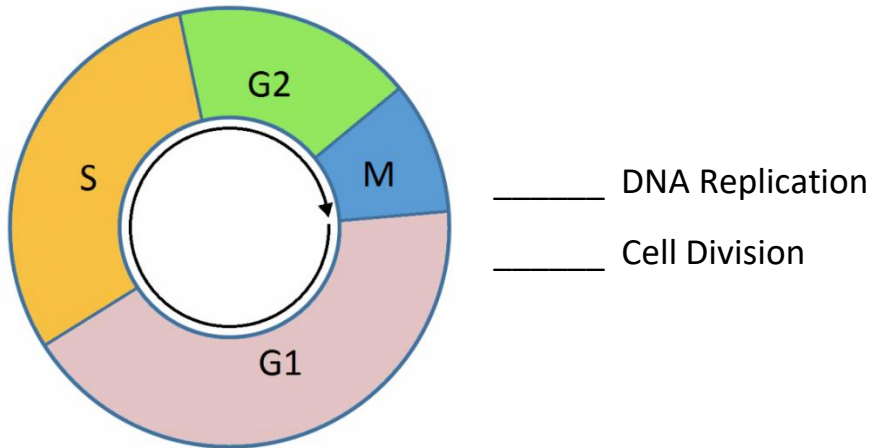
What is going on during Interphase of the cell cycle?



Study the images above. Answer the following questions.

- What are the 3 phases of Interphase?
 - S, G₂, M
 - G₂, M, G₁
 - M, G₁, S
 - G₁, S, G₂
- What are the four phases of Mitosis?
 - G₁, S, G₂, M
 - Prophase, Metaphase, Anaphase, Telophase
 - Interphase, G₁, S, G₂
 - Mitosis, S, M, Interphase
- Which part of the cell cycle is longer?
 - Mitosis
 - Interphase
- When does DNA Replicate?
 - G₁
 - S
 - G₂
 - Mitosis
- What happens in G₁?
 - The cell grows
 - The cell makes materials
 - The cell divides
 - The cell replicates DNA
- What happens in S?
 - The cell grows
 - The cell makes materials
 - The cell divides
 - The cell replicates DNA
- What happens in G₂?
 - The cell grows
 - The cell makes materials
 - The cell divides
 - The cell replicates DNA
- What happens in Mitosis?
 - The cell grows
 - The cell makes materials
 - The cell divides
 - The cell replicates DNA

9. Fill in the blanks on the right with the phase each event occurs in.

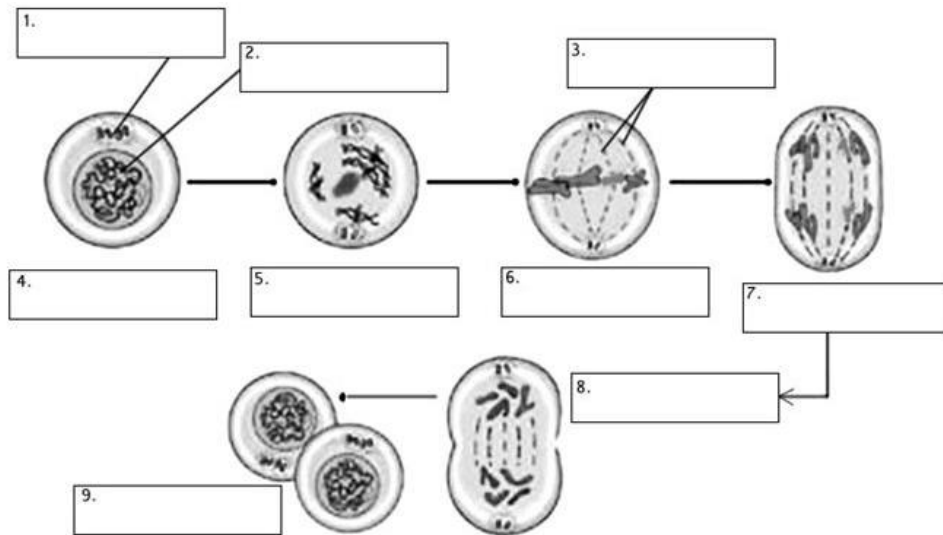


10. Uncontrolled cell growth leads to

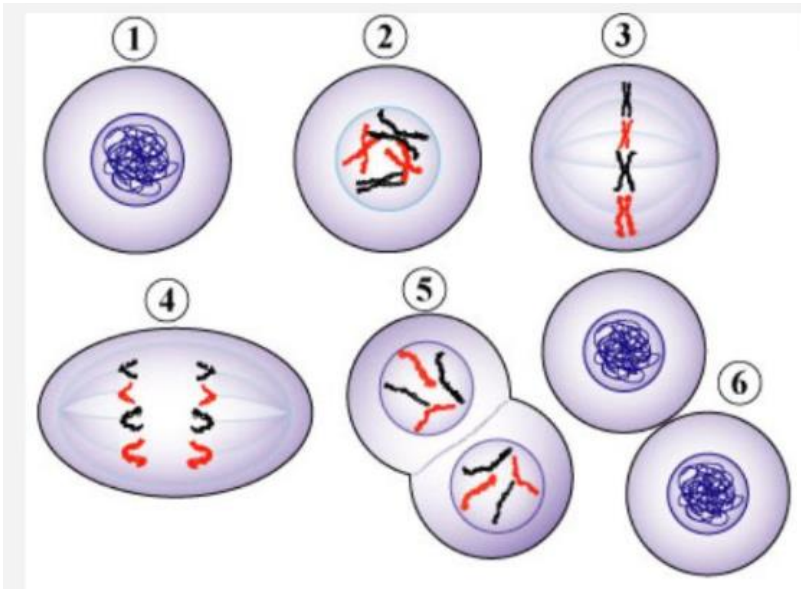
- a. Cancer
- b. Disease
- c. Healthy cells
- d. Cell death

11. Write in the phases of the Cell Cycle (Interphase + Mitosis):

Use **Interphase**, **Prophase**, **Metaphase**, **Anaphase**, **Telophase** and **Cytokinesis**

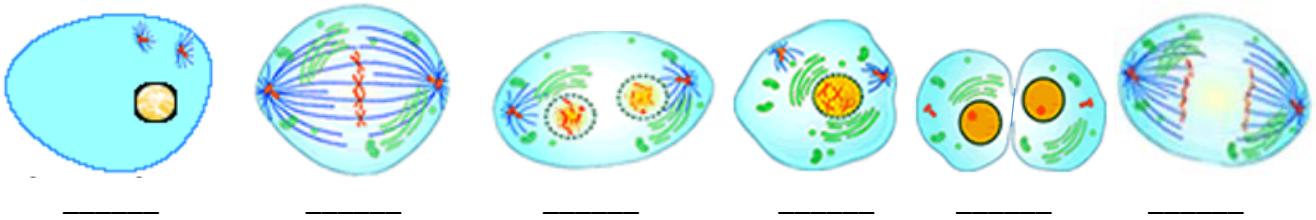


12. Name the Cell Cycle phases below. **Word Bank: Prophase, Anaphase, Interphase, Telophase**

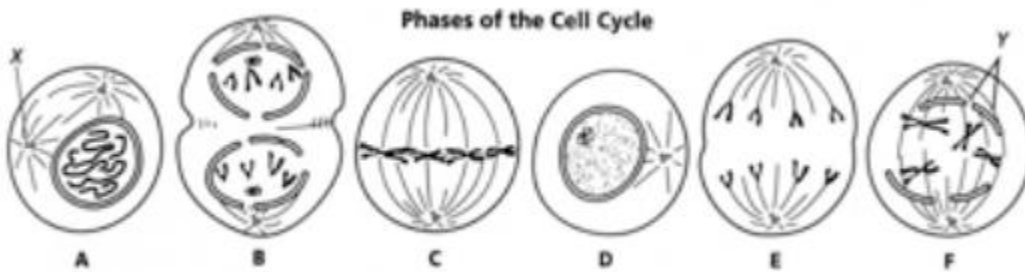
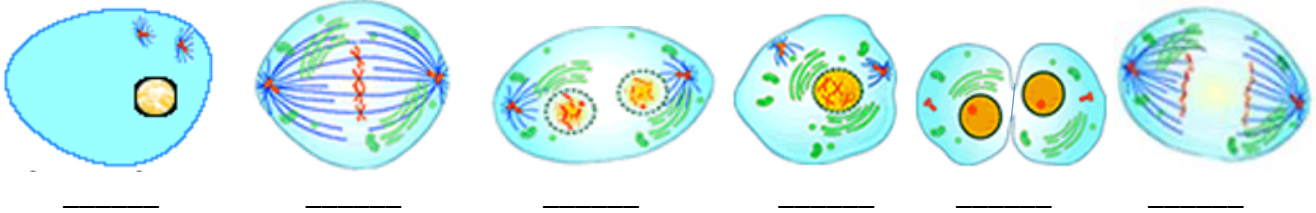


- 1. _____
- 2. _____
- 3. Metaphase
- 4. _____
- 5. _____
- 6. Cytokinesis

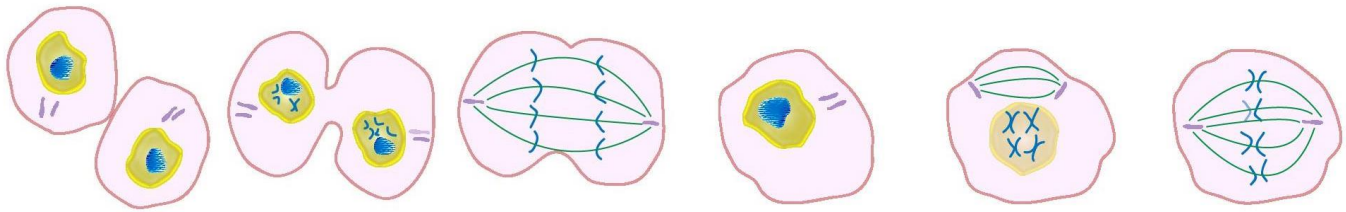
1. Place the letter of correct stage of the cell cycle below each diagram (I, P, M, A, T, C):



2. Number the following phases in order of occurrence:



3. What is the correct order of the stages above? _____, _____, _____, _____, _____, _____



A

B

C

D

E

F

4. What is the name of each phase above?

A _____

D _____

B _____

E _____

C _____

F _____

5. What is the correct order of the phase above? _____, _____, _____, _____, _____, _____