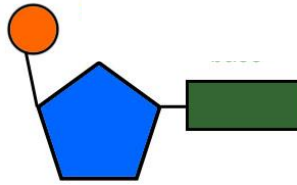
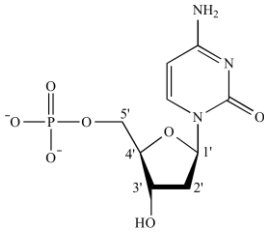


Name: _____ Date: _____ Period: _____

Teacher's Pet Video: DNA Structure and Function

Go to www.biologybynapiet.com, go to the DNA & Cell Cycle Unit, scroll down to today's date. The video is embedded for you. Or you can google "Teachers Pet DNA structure".

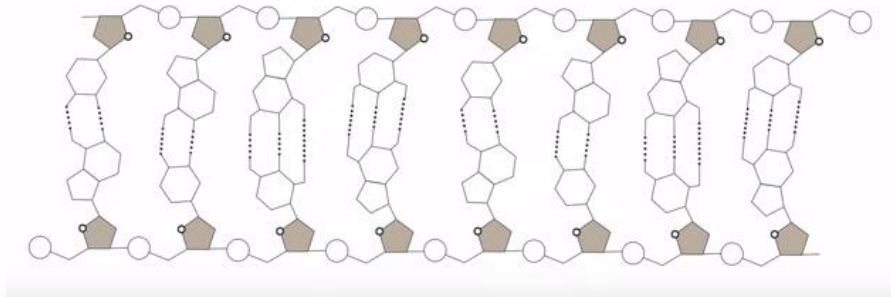
1. What are the monomers of DNA?
2. Label the nucleotides below:



3. What are the four bases in DNA (you can just list the letters)?
4. What does double helix refer to?
5. What is the backbone of DNA made of?
6. Which molecule on the backbone do the bases always pair with?
7. What type of bond holds the bases together?
8. Strands of DNA are _____ to each other.
9. Label the DNA strand below:

NOTE: You do NOT need to know how many hydrogen bonds hold the bases together. You also do NOT need to know which are pyrimidines and purines or what that means.

Label the following: Deoxyribose sugar, Phosphate, Hydrogen bonds and fill in all the base pairs.



Teacher's Pet Video: DNA Replication

Go to www.biologybynapiet.com, go to the DNA & Cell Cycle Unit, scroll down to today's date. The video is embedded for you. Or you can google "Teachers pet dna replication".

1. What is DNA replication?
2. What is broken to split the DNA?
3. An enzyme, DNA polymerase, adds complementary nucleotides by pairing the _____ of the nucleotides. A always pairs with _____ and C always pairs with _____.
4. What is the complementary strand for the strand below?

A A T C G C T G C A T T A G

5. How often do errors in DNA replication occur?
6. What is the end result of DNA replication?
7. How do the two new DNA strands compare?