

## Plant Vocabulary – Option 2

Each scroll below contains a definition or an image of the terms you need to know. Using these images and definitions tape, glue or write the correct term on each scroll.

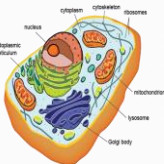
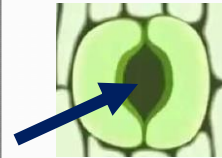
Regulates the opening and closing of stomata



Response to touch stimulus

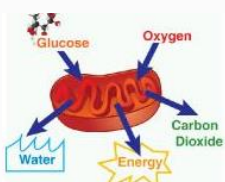
Functions in structure, houses vascular tissue

System that transports water, nutrients and chemicals throughout the plant



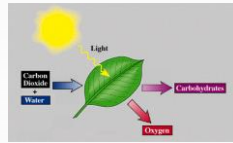
Chemical messages used for cell communication

Evaporation of water from plants

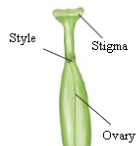


Directional response to a stimulus

Waxy coating  
on plants to  
prevent  
transpiration



Tissue that  
transports water  
& minerals from  
roots up



Tissue that  
transports  
nutrients from  
leaves down

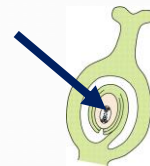
Connects the  
stigma to the  
ovary

Contains  
pollen



Sticky to  
catch pollen

Supports the  
anther in  
flowers



Get signed off before moving on: \_\_\_\_\_

<b>Eukaryote</b>	<b>Stem</b>
<b>Transpiration</b>	<b>Stomata</b>
<b>Guard Cells</b>	<b>Vascular Tissue</b>
<b>Tropism</b>	<b>Anther</b>
<b>Roots</b>	<b>Ovule</b>
<b>Xylem</b>	<b>Stigma</b>
<b>Phototropism</b>	<b>Thigmotropism</b>
<b>Hormones</b>	<b>Filament</b>
<b>Photosynthesis</b>	<b>Cellular Respiration</b>
<b>Stamen</b>	<b>Style</b>
<b>Gravitropism</b>	<b>Cuticle</b>
<b>Phloem</b>	<b>Pistil</b>

You may rewrite each word on the scroll on which it belongs or you may cut out and tape or glue each term to the scroll it belongs to.

