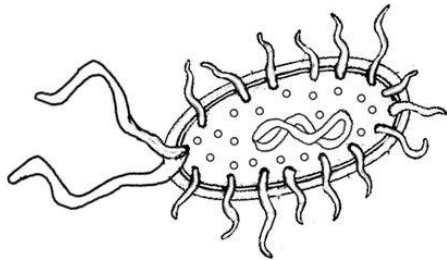


Prokaryotic Characteristics



Characteristics shared by both

Draw an arrow from the living organism to its type of cell.

Cyanobacteria

Mushroom

Euglena

E. coli bacteria

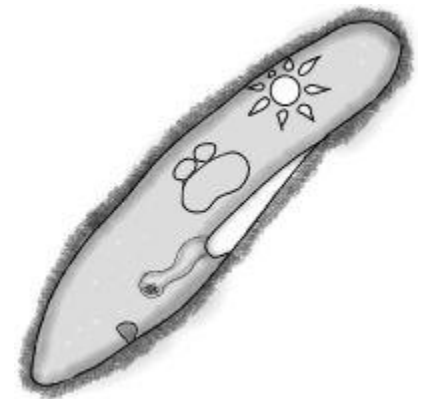
Eubacteria

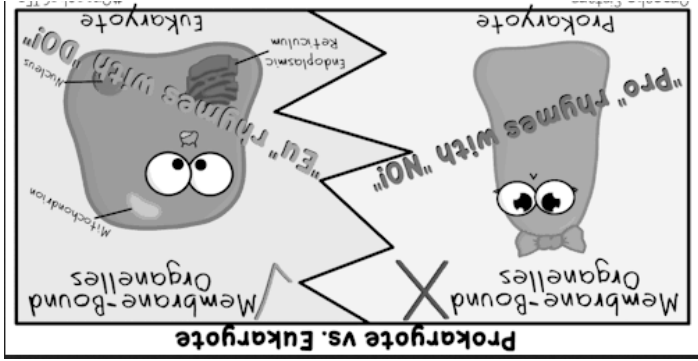
Amoeba

Rabbit

Archaeobacteria

Eukaryotic Characteristics





PROKARYOTE!
 PRO = NO NUCLEUS
 BACTERIA ONLY

EUKARYOTE!
 EU = TRUE NUCLEUS
 ANIMALS, PLANTS, FUNGI, PROTISTS