

Classroom Expectations:

- No cell phones.
- Heads up at all times.
- Listen when your teacher is instructing.
- Raise your hand if you have a question.
- Be respectful to EVERYONE!

Objectives:

- I can correctly respond to a safety emergency.
- I can identify safety equipment and explain how it is used.
- I can use writing to identify safety equipment using visual cues.

Mrs. Napier's Lab Rules

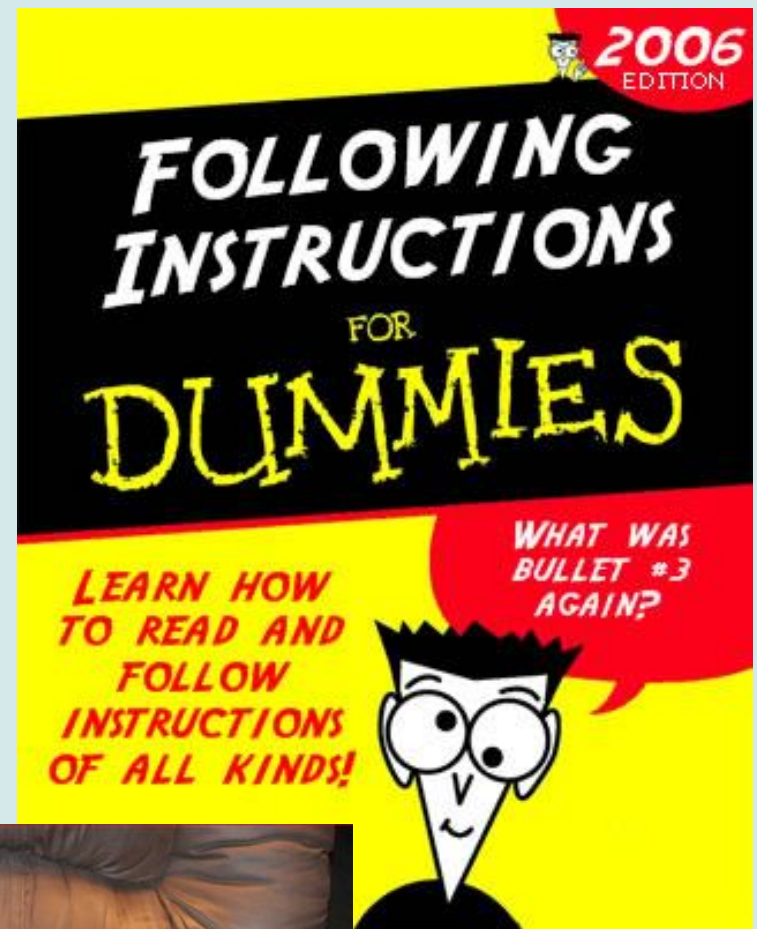
<https://www.youtube.com/watch?v=2de-d4SRa30&feature=youtu.be>

SAFETY RULES!



Safety First!

Follow all
written and
verbal
instructions
carefully.



Safety First!

Read all
procedures
thoroughly
before
starting an
experiment.



Safety First!

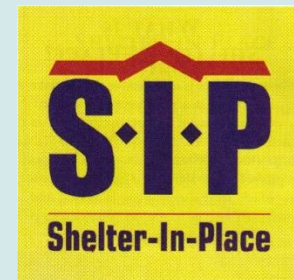
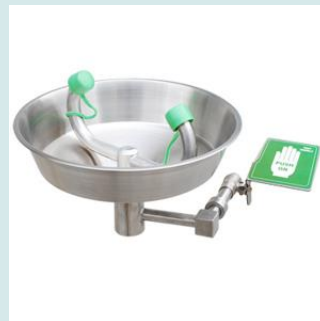
Always wear
your safety
gear.



Of course it's ALL necessary. You're
BOILING water today !

Safety First!

Know the
locations and
how to operate
all safety
equipment.



Safety First!

Do not touch
any
equipment,
chemicals, or
other
materials
without
permission.



Safety First!

Do not eat food or drink beverages in the laboratory.



Safety First!

No
horseplay in
the lab!



Safety First!

Stay with
your lab
group only.



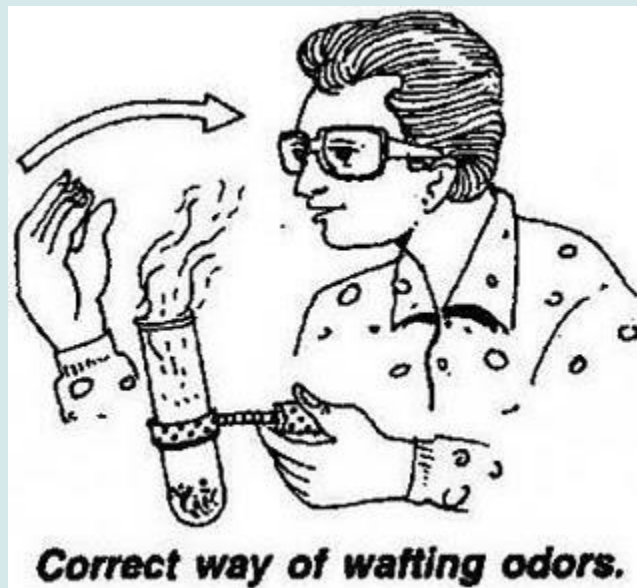
Safety First!

Notify the teacher immediately of any unsafe conditions you observe.



Safety First!

Only smell chemicals when directed to do so and ONLY by the wafing method. **WAVE** the odor toward you.



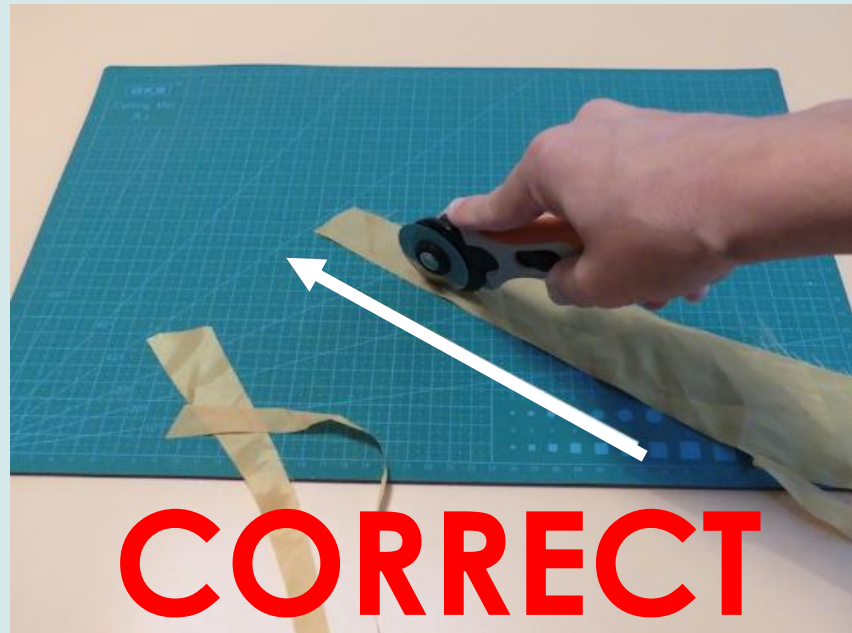
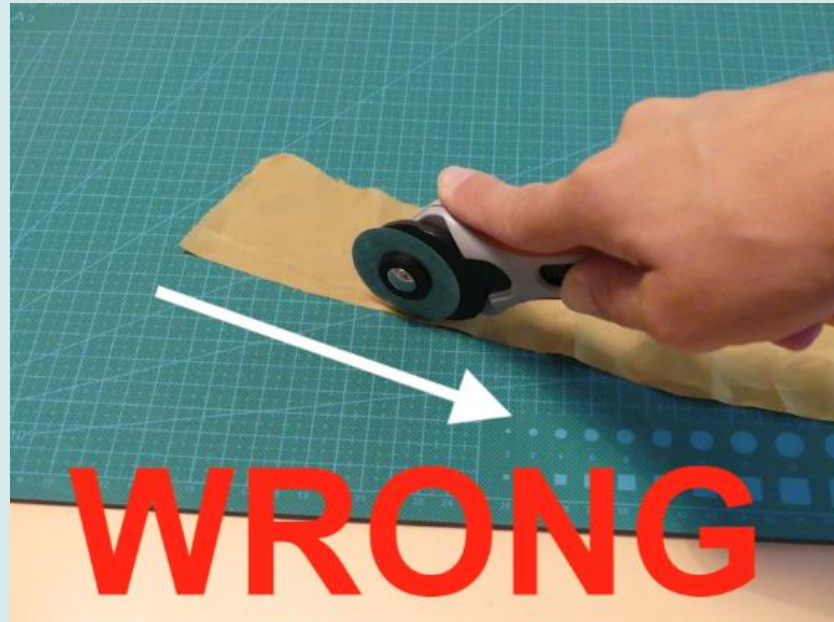
Smart guy!



Dumb guy!

Safety First!

When using scissors, knives or other blades **ALWAYS** cut **AWAY** from yourself.



Safety First!

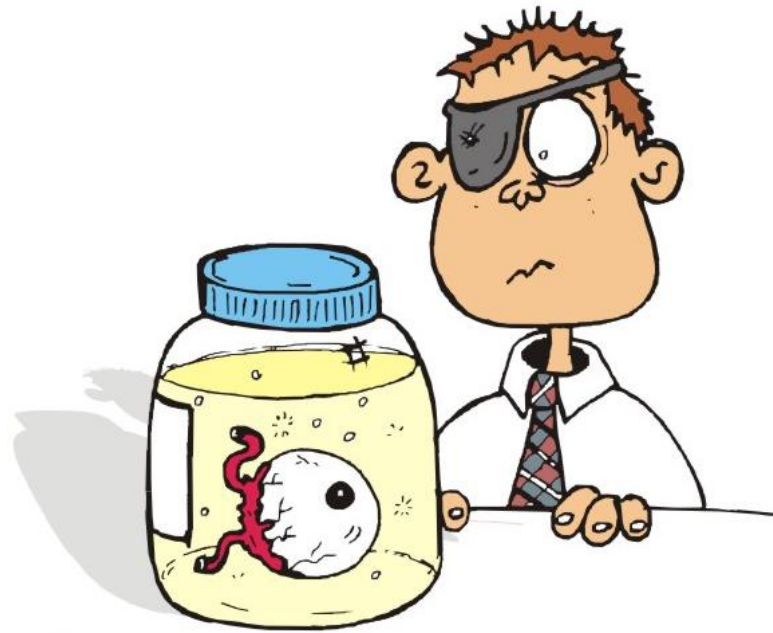
Never pour chemicals down the sink without permission.
Always ask the teacher how to dispose of items and clean up.



Safety First!

Any time chemicals, heat, or glassware are used, students will wear goggles.

Protect your Eyes

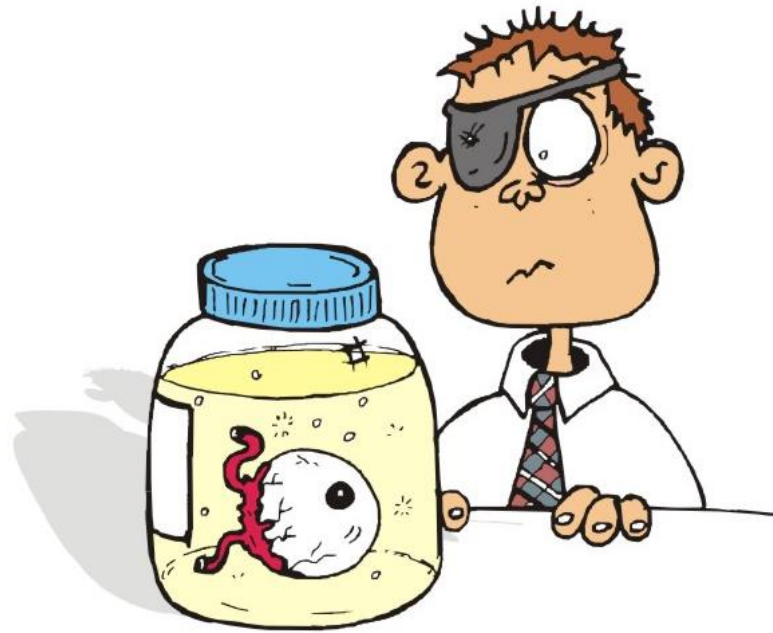


Always wear your Safety Glasses

Safety First!

If an unknown substance gets in your eye, immediately **rinse with water for 10 min** at the eye wash station, tell teacher after you begin rinsing.

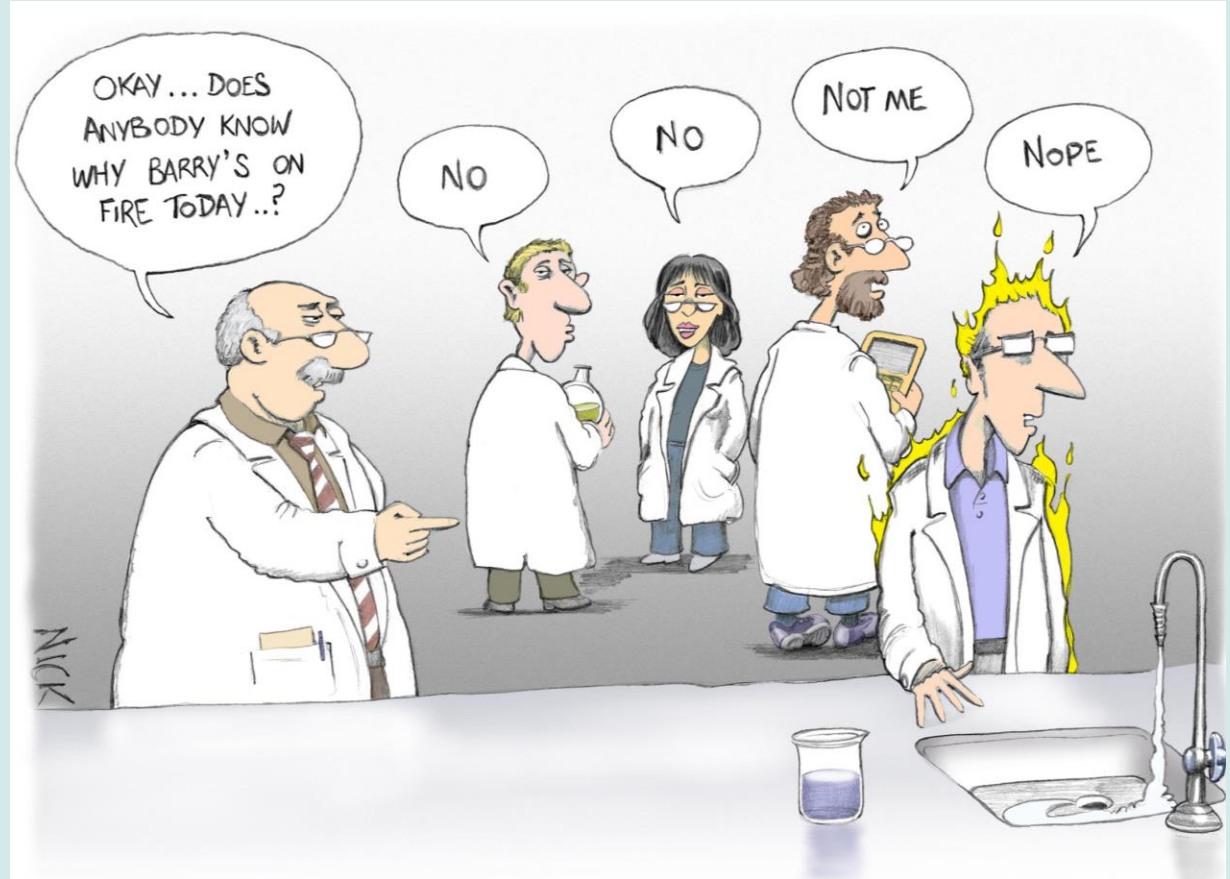
Protect your Eyes



Always wear your Safety Glasses

Safety First!

Report any
accident or
injury
to the
teacher
immediately.



What is the **first thing** you do if you see something unsafe, have an accident or someone is hurt?

Tell the teacher!

Safety First!

Handle all living organisms in the classroom or used in a laboratory activity in a humane manner.



Authorities march in on the cruelest kind of animal testing.

Safety First!

Do not touch, taste, or smell any food items or chemicals unless instructed to do so.



Safety First!

Never
handle
broken glass
with your
bare hands.



Safety First!

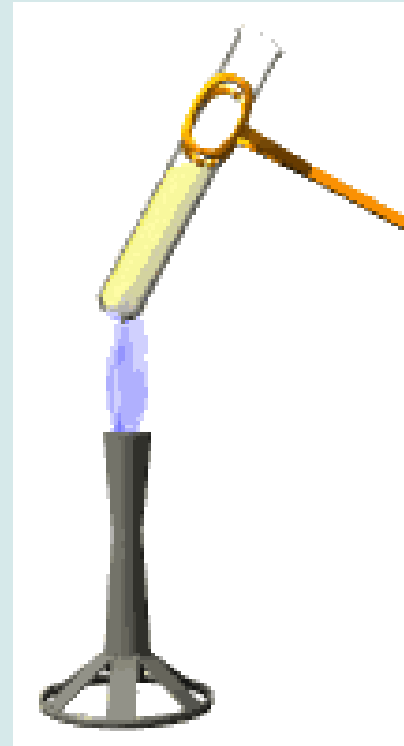
Place broken or waste glassware in the designated glass disposal container. Ours is a plastic box on the counter.



Safety First!

Do not point the open end of a test tube being heated **at yourself** or anyone else.

Never put a stopper on a container being heated.

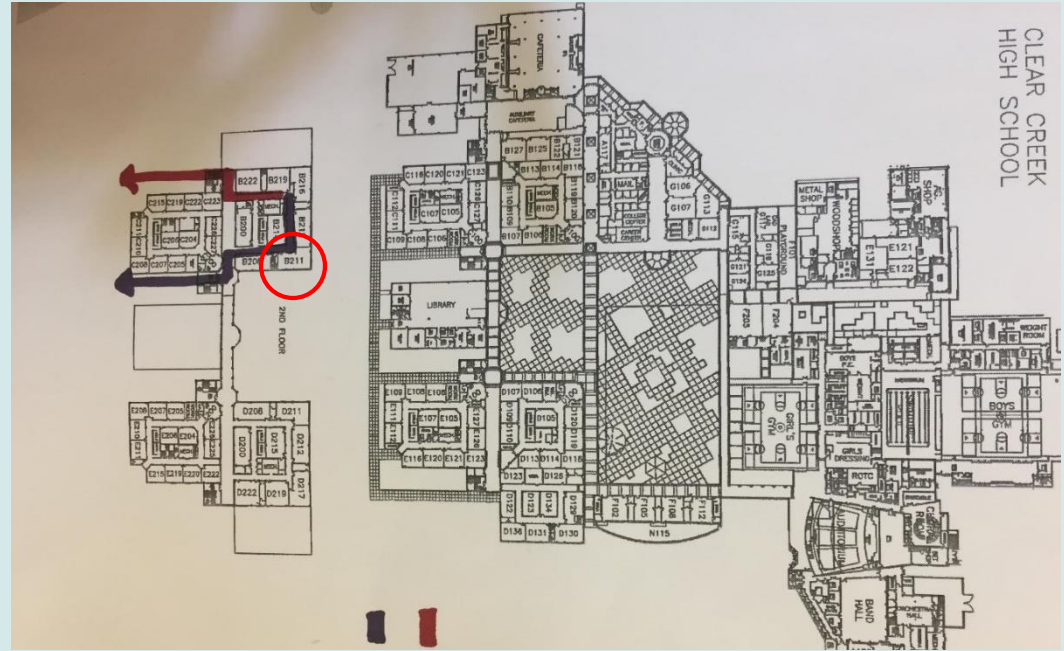


Safety First!

Never look
into a
container
that is being
heated.



If the fire alarm goes off during class, stay calm and follow the instructor towards the primary evacuation route. If the primary is blocked, use the secondary route.





**OBSERVE ALL
SAFETY SIGNS**

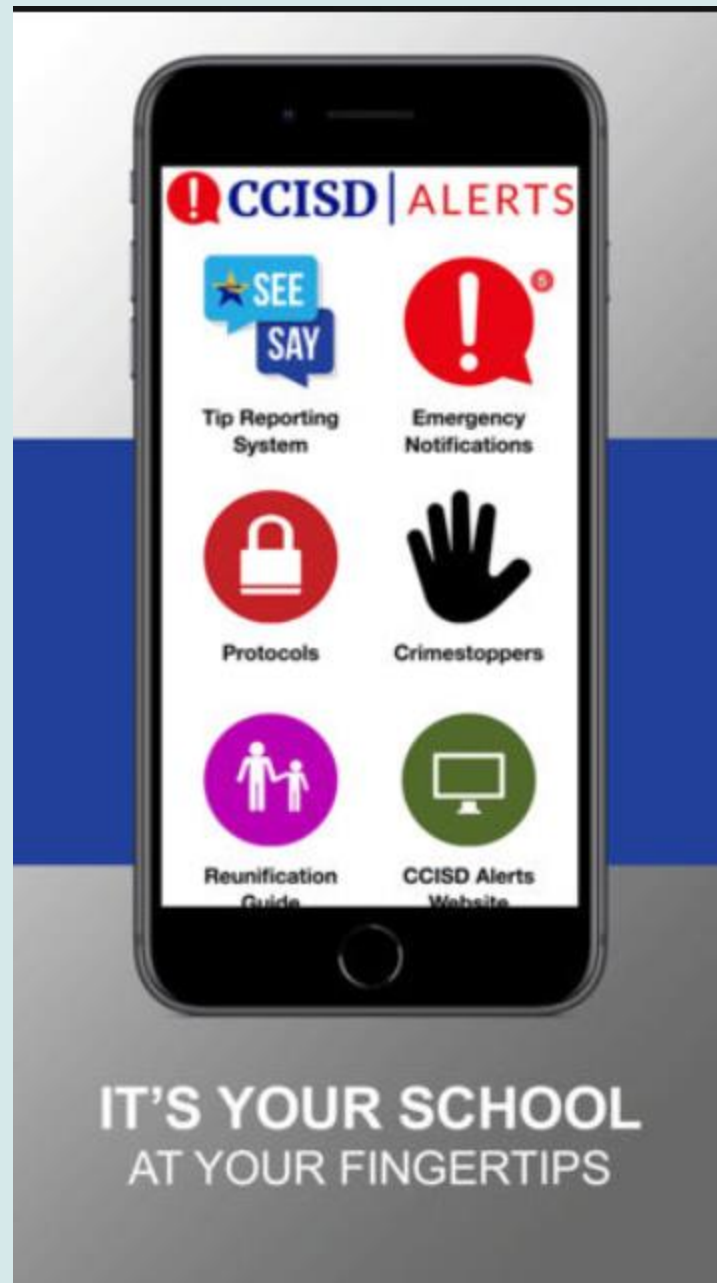


**DON'T BE
"THAT GUY"**

CCISD Alert

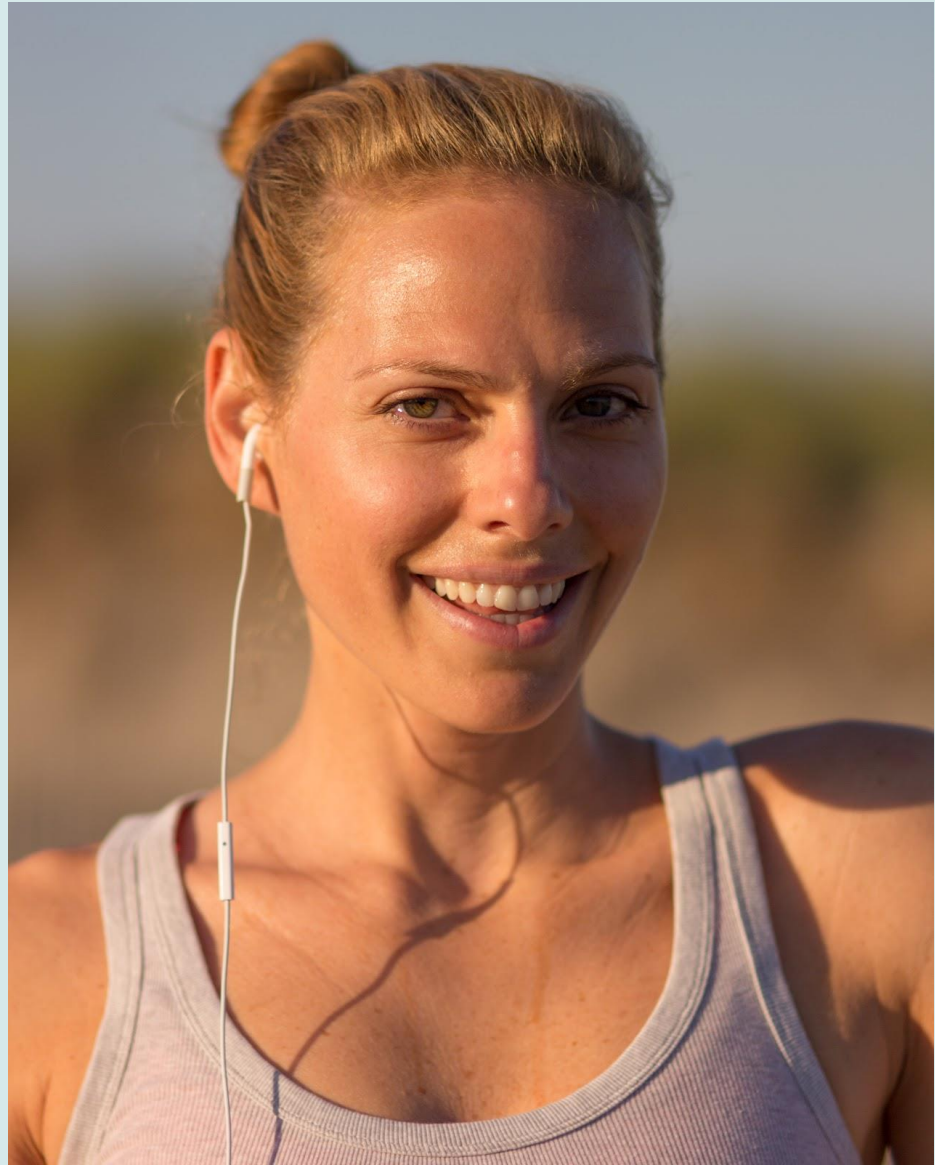
Go to the APP Store
and download this free
app.

**SEE SOMETHING, SAY
SOMETHING!**



For your safety in the halls . . .

You may only
wear **ONE earbud**.
You need to be
aware of your
surroundings.



What do you do in this class during a lock down?

Where do you go during a fire drill when you are in this class?

It's scavenger hunt time!

- <https://youtu.be/BRDApYgvDqQ>