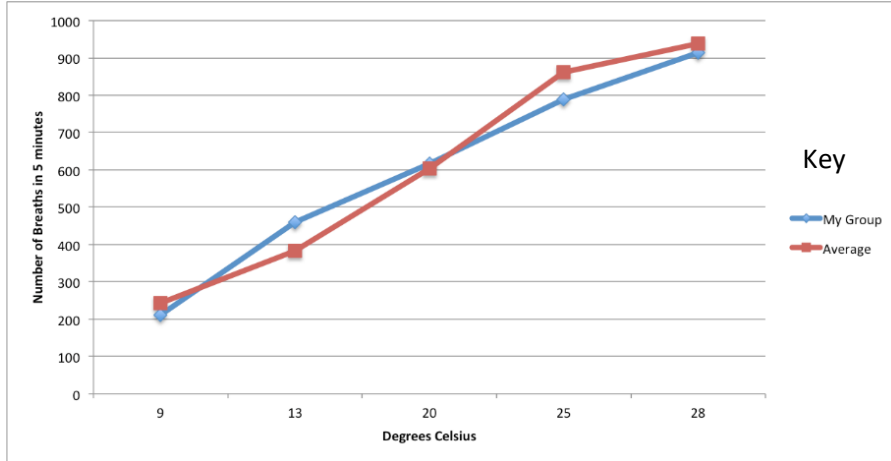


Scientific Process Test Review



I² the graph

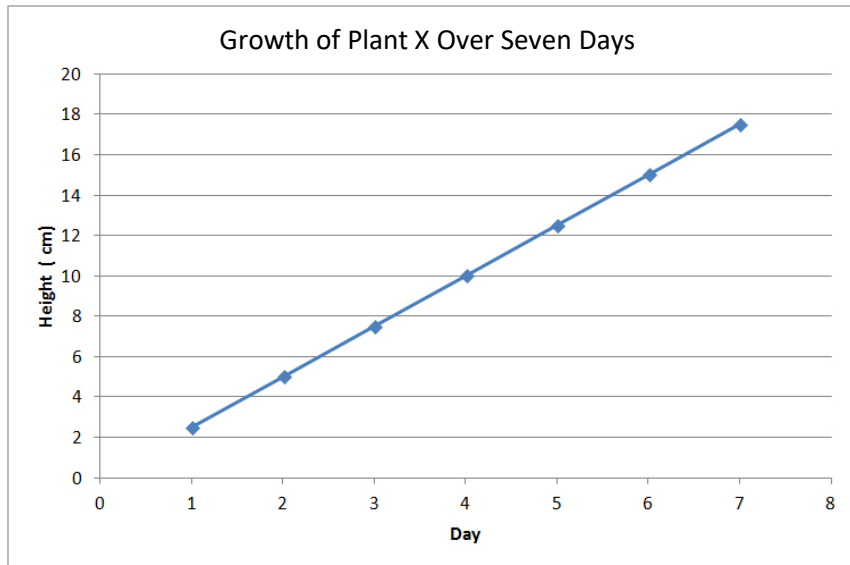
At 20 degrees Celsius, what is the number of breaths? _____

How much time is used to measure breaths? _____

Why is a key used in this graph?

What is the Independent variable? _____

What is the Dependent variable? _____



I² the graph

How does the height change in the first 7 days? _____

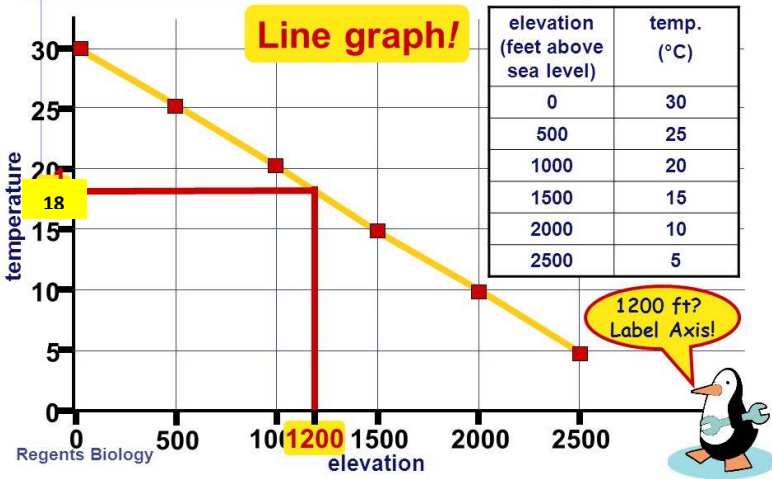
What is the title of this graph?

What is the unit of measure for height? _____

What is the Independent variable? _____

What is the Dependent variable? _____

How does elevation affect temperature?



I² the graph

What is the title of the graph?

What is the temperature at 1200 feet? _____

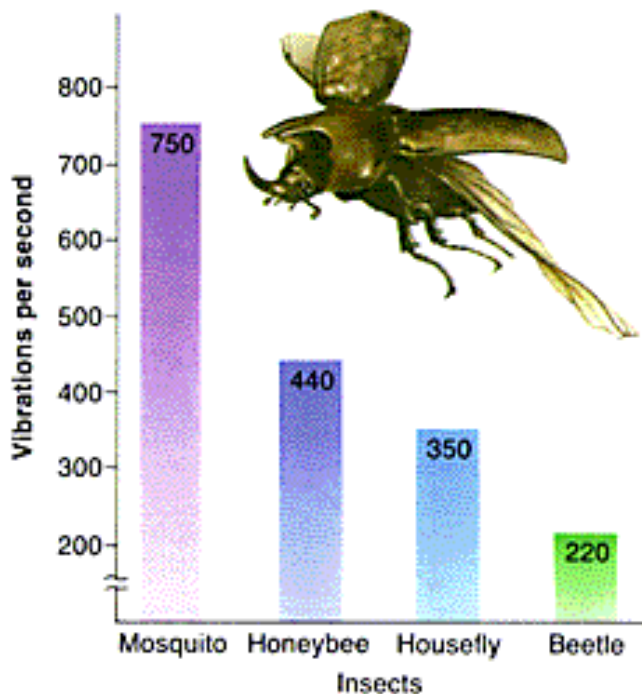
What is the temperature at 2000 feet? _____

What unit is temperature measured in? _____

What is the Independent variable? _____

What is the Dependent variable? _____

What is the unit of measure for elevation? _____



I² the graph

What would be a good title for this graph? _____

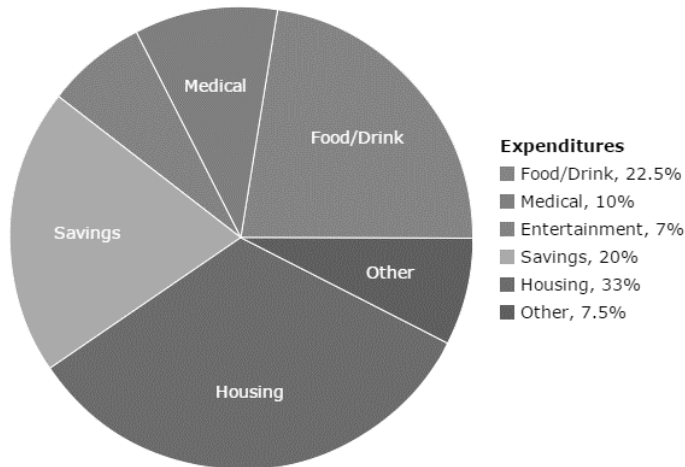
Which insect has the most vibrations per second? _____

How many vibrations does a housefly have per second? _____

A wasp has 550 vibrations per second. Draw a bar on the graph for a wasp.

What is the Independent variable? _____

What is the Dependent variable? _____



Which label is missing on the pie graph? _____

What is the total expenditure of medical and housing? _____

Which expenditure has the greatest percentage? _____

How many different expenditures are represented on the pie graph? _____

What is represented on this pie graph? _____

What is the proper procedure to use to distinguish fire on someone's clothing?

- A. Use a fire extinguisher
- B. Use an eye wash station
- C. Use a safety shower
- D. Use a fire blanket

What is the proper procedure to dispose of broken glassware?

- A. Put it in the trash
- B. Leave it someone will get it later
- C. Put it in the broken glassware container
- D. Take it to the restroom and trash it

Any time chemicals, heat, or glassware are used, students will wear?

- A. An apron
- B. Goggles
- C. A hoodie
- D. Gloves

What should you wear when boiling samples in a test tube?

- A. Goggles and apron
- B. A hat
- C. Goggles only
- D. Closed toed shoes